

GasFlo Products LL Series Valves are manufactured with an extended inlet leg to allow handle clearance from mating equipment without the need for additional bushings. This economical springless, diaphragm design makes for the perfect regulator outlet valve, providing a positive shut off and smooth operation for pressure ranges from vacuum to 3500 psig.

FEATURES

- BAR STOCK CONSTRUCTION
- EXTENDED LONG LEG INLET
- SPRINGLESS DESIGN
- METAL DIAPHRAGM SEALED
- POSITIVE SHUT-OFF
- QUICK ACTING OPEN TO CLOSE
- LOW INTERNAL VOLUME
- HIGH CYCLE LIFE
- LEAK TEST PORT
- ULTRASONICALLY DI CLEANED
- 100% HELIUM LEAK TESTED
- AVAILABLE WITH PANEL MOUNT OPTIONS
- AVAILABLE WITH ELECTROPOLISHED ID SURFACE ON REQUEST
- AVAILABLE IN REVERSE FLOW DESIGNS
- CUSTOM MATERIALS AND CONFIGURATIONS AVAILABLE ON REQUEST

MATERIALS OF CONSTRUCTION

- BODY OPTIONS:
BRASS, NICKEL PLATED BRASS, 316L STAINLESS STEEL, MONEL® R405, OR ALUMINUM SILICON BRONZE
- SEAT OPTIONS:
PCTFE OR POLYIMIDE
- WETTED DIAPHRAGM:
316L STAINLESS STEEL
- BONNET NUT:
BRASS, NICKEL PLATED BRASS, OR 303 STAINLESS STEEL
- STEM:
416 STAINLESS STEEL
- HANDLE:
ABS PLASTIC
- LABEL:
VINYL/MYLAR

MONEL® - TM - SPECIAL METALS CORPORATION

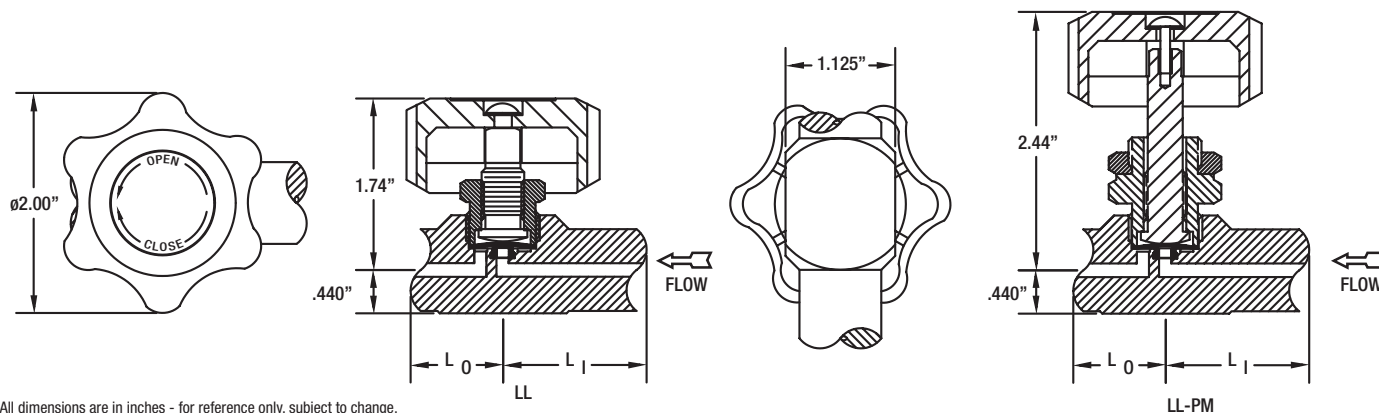
APPLICATIONS

- REGULATOR OUTLET VALVES
- GAS/FLUID CONTROL PANELS
- MANIFOLD SYSTEMS
- SAMPLING SYSTEMS
- GAS ANALYZERS
- GENERAL SHUT-OFF

END CONNECTION OPTIONS

- 1/4" MALE AND 1/4" FEMALE PIPE THREAD
- 1/4" COMPRESSION
- 1/4" AND 3/8" TUBE SOCKET WELD
- 1/4" PIPE SOCKET WELD
- 1/4 MALE AND 1/4 FEMALE FACE SEAL
- 1/4" AND 3/8" ORBITAL TUBE WELD
- CUSTOM CONNECTIONS

DIMENSIONAL INFORMATION



All dimensions are in inches - for reference only, subject to change.

SPECIFICATIONS

PRESSURE RATING: 3500 PSIG
FLOW COEFFICIENT $C_v = .13$
SEAT ORIFICE SIZE: $\phi .125"$

STANDARD SEAT MATERIAL: PCTFE
TEMPERATURE LIMITS: -65°F TO 150°F
MAX. ALLOWABLE SEAT LEAKAGE: 2×10^{-8} ATM CC/SEC He
MAX. INBOARD LEAKAGE: 2×10^{-8} ATM CC/SEC He

WETTED DIAPHRAGM: STAINLESS STEEL 316L
OPTIONAL BOTTOM MOUNT: $2 \times \#10-32$ TAPPED HOLES
OPTIONAL PANEL MOUNT: PANEL HOLE SIZE: $49/64"$

ORDERING INFORMATION

TYPICAL PART NUMBER

PRODUCT FAMILY	SERIES	INLET PORT SIZE	OUTLET PORT SIZE	MATERIAL	OPTIONAL FEATURES	OUTLET CONNECTION	INLET CONNECTION
VALVES	LL	$4 = 1/4"$ $R4 = \text{REVERSE FLOW } 1/4"$	$4 = 1/4"$ $6 = 3/8"$	ASB = ALUMINUM SILICON BRONZE BR = BRASS CH = NICKEL PLATED BRASS MO = MONEL® SS = STAINLESS STEEL 316L	- BM = BOTTOM MOUNT - PI = POLYIMIDE SEAT - PM = PANEL MOUNT	C = COMPRESSION ($L_0 = .91"$) F = FEMALE NPT ($L_0 = 1.01"$) FFS = FEMALE FACE SEAL ($L_0 = 1.48"$) M = MALE NPT ($L_0 = 1.36"$) MFS = MALE FACE SEAL ($L_0 = 1.15"$) P = PIPE SOCKET WELD ($L_0 = 1.01"$) SW = TUBE SOCKET WELD ($L_0 = 1.18"$) TS = ORBITAL TUBE WELD ($L_0 = .88"$)	C = COMPRESSION ($L_I = 1.70"$) F = FEMALE ($L_I = 1.80"$) FFS = FEMALE FACE SEAL ($L_I = 2.27"$) M = MALE NPT ($L_I = 2.15"$) MFS = MALE FACE SEAL ($L_I = 1.94"$) P = PIPE SOCKET WELD ($L_I = 1.80"$) SW = TUBE SOCKET WELD ($L_I = 1.97"$) TS = ORBITAL TUBE WELD ($L_I = 1.67"$)

MONEL® - TM - SPECIAL METALS CORPORATION

ALSO AVAILABLE WITH PNEUMATIC OPERATOR, SEE LPLL SERIES.

Minimum order quantities may be required. Some inlet/outlet combinations may not be available.

VALVE, FITTING OR OTHER COMPONENT FUNCTION, PROPER INSTALLATION, MATERIALS COMPATIBILITY, ADEQUATE RATINGS, OPERATION AND MAINTENANCE ARE THE RESPONSIBILITY OF THE SYSTEM DESIGNER AND USER.



PRODUCT FAILURE, IMPROPER SELECTION OR IMPROPER USE OF THE PRODUCTS AND/OR SYSTEMS DESCRIBED HEREIN OR RELATED ITEMS CAN CAUSE DEATH, PERSONAL INJURY AND PROPERTY DAMAGE.

MADE IN
USA

19 Industrial Road, Fairfield, NJ 07004 Phone: 973-276-9011 Fax: 973-276-9014 www.gasflo.com