



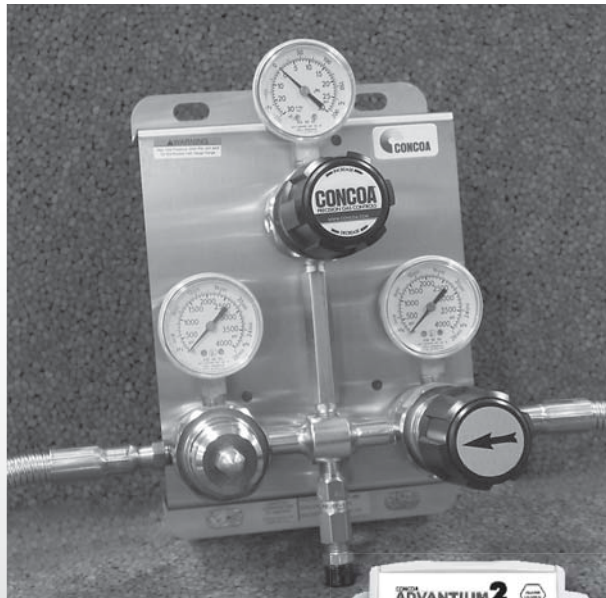
# 500 Series Distribution Systems

## Swichover

The 527 Series Swichover is an automatic swichover system designed to supply a continuous supply of high purity or corrosive gas. The system comes with either flexible hoses for use with two cylinders or manifold connectors for use with the Maniflex Modular Manifold System. Due to pressure differential considerations, an integral line regulator is available to maintain constant downstream pressure.

### Typical Applications

- Ultra high purity gases
- Research grade pure gases
- GC carrier and support gases
- Pure and mixed process gases
- Corrosive gases
- Ammonia
- Hydrogen Sulfide



Shown with attached flexible hoses. Available with optional remote alarm.

Ask About Our

**EXTENDED  
WARRANTY**

On This CONCOA Product



### Features

**400 Series Stainless Steel Regulators**  
Capsule® seat

**Metal-to-Metal Diaphragm Seal**  
No possibility of gas contamination

**User-Friendly Priority Valve**  
One knob switches cylinder priority

**Check Valves in Inlet Gland**  
Prevents contamination and back flow.

**Compatible with Maniflex Manifolds**  
Multiple cylinders per side

**Optional Line Regulator**  
Stable line pressure during change over

**Optional Remote Alarm**  
Easy integration with Advantium system

### Materials

**Bodies**  
316L stainless steel barstock

**Diaphragms**  
316L stainless steel

**Seats**  
PTFE  
PCTFE with 4500 PSIG inlet

**Filters**  
Patented 10 micron 316 mesh

**Internal Seals**  
PTFE

### Specifications

**Maximum Inlet Pressure**  
3000 PSIG (210 BAR)  
4500 PSIG (310 BAR) optional

**Temperature Range**  
-40°F to 140°F (-40°C to 60°C)

**Gauges**  
2" diameter stainless steel

**Outlet Connection**  
1/4" MPT (without line regulator)  
1/4" FPT (with line regulator)

**Helium Leak Integrity**  
1 x 10<sup>-8</sup> scc/sec

**Cv**  
0.1

**Weight**  
8.25 lbs. (3.71 kg)

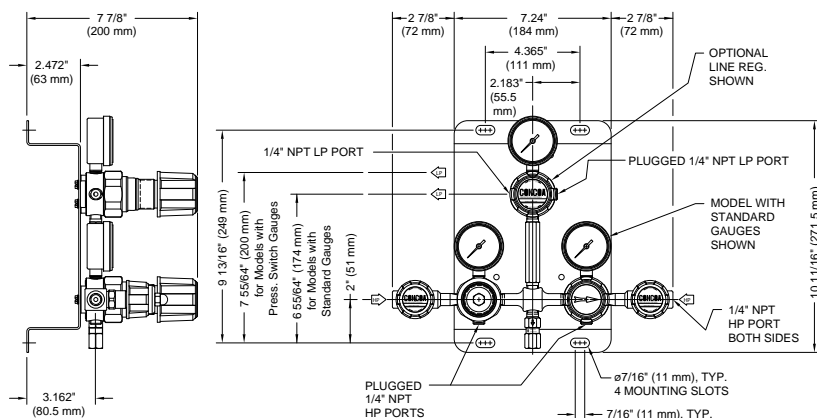
CRN OH 5216.5C

# 500 Series Distribution Systems

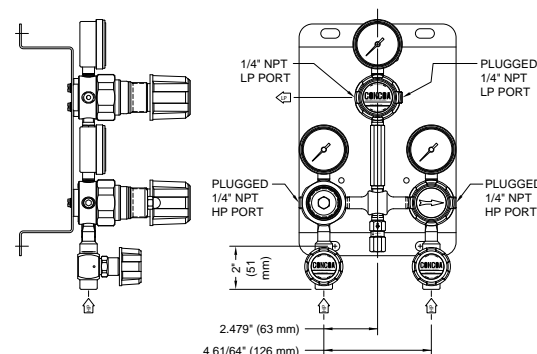


## Installation Information

Diaphragm Valves on Side Ports



Diaphragm Valves on Bottom Ports



## Ordering Information

527	A	B	C	D	-CON	OPTIONS
Series 527	Switching Pressure (Priority R/L)	Inlet Connection	Line Regulator	Assembly	Hose	
	1: 125/105 PSIG*	0: 1/4" FPT ports	0: None	1: 0-4000 PSI/kPa gauges* no alarm capability	Please specify inlet connection (if applicable)  CGA DIN 477 BS 341 and others available	S: Stainless steel bonnets
	2: 70/50 PSIG*	1: Flexible stainless steel hoses (36")	1: 0-15 PSIG	2: 0-4000 BAR/PSIG gauges* no alarm capability		
	3: 100/75 PSIG	2: Manifold connectors*	2: 0-50 PSIG	3: 0-4000 BAR/PSIG* with pressure switches† and 110V remote alarm		
	4: 200/170 PSIG	3: Flexible stainless steel hoses (24")	3: 0-100 PSIG	4: 0-4000 BAR/PSIG* with pressure switches†and 220V remote alarm		
	5: 500/470 PSIG	4: Diaphragm valves with 1/4" FPT port	4: 0-250 PSIG	5: 0-600 BAR/PSIG gauges no alarm capability		
	7: 150/130 PSIG	5: Diaphragm valves with hoses (36")	5: 0-400 PSIG	6: 0-600 BAR/PSIG with pressure switches† and 110V remote alarm		
	8: 300/270 PSIG	6: Diaphragm valves with manifold connectors*	7: 0-150 PSIG	7: 0-600 BAR/PSIG with pressure switches† and 220V remote alarm		
	*Not available with 4500 PSIG inlet	7: Diaphragm valves with hoses (24")		8: 0-4000 BAR/PSIG* with pressure switches† and without remote alarm		
	NOTE: Switching pressure must be higher than line regulator pressure selected in column C .	8: Flexible stainless steel hoses (36") (4500 PSIG maximum inlet pressure)		9: 0-600 BAR/PSIG with pressure switch and without remote alarm		
		9: 1/4" FPT ports (4500 PSIG maximum inlet pressure)		*0-6000 PSI gauges with 4500 PSIG maximum inlet option †Intrinsic safety barriers are required for flammable gas service or for use in hazardous environments.		
		* See page 36 and 37 for manifold ordering information				